

Whetten Woods Preserve

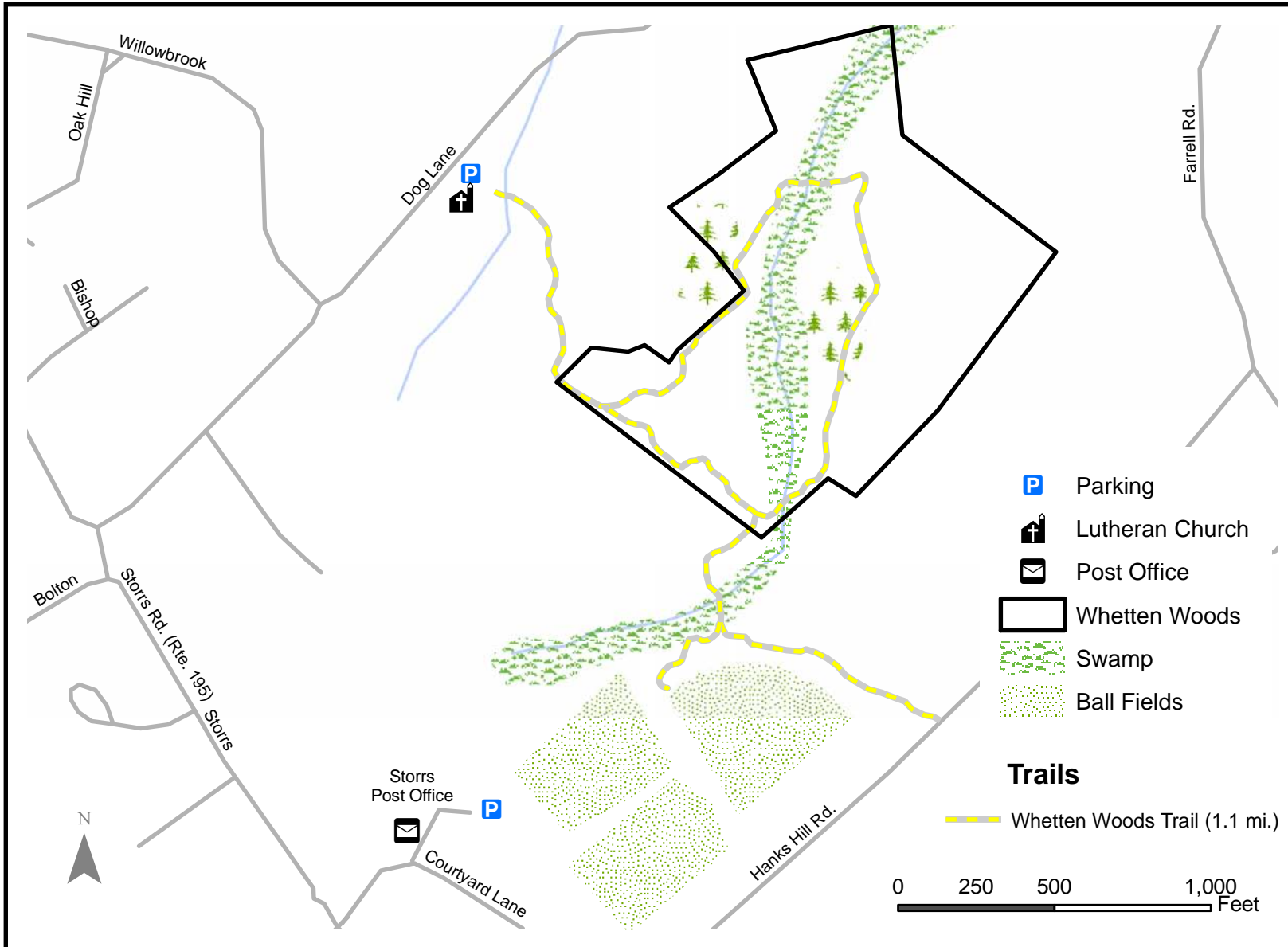
Mansfield, CT

Whetten Woods Preserve is a 29-acre parcel. 24 acres were given to the Trust by Theora Whetten in 1998. Another 5 acres were added though a subdivision set aside in 2009. Although it has no road frontage, it connects to town open space and will provide an important green area as downtown Storrs grows. Whetten Woods is a forested area with rolling terrain and a band of wetlands through the center. The two groves of evergreens are host to roosting owls.



Joshua's Trust

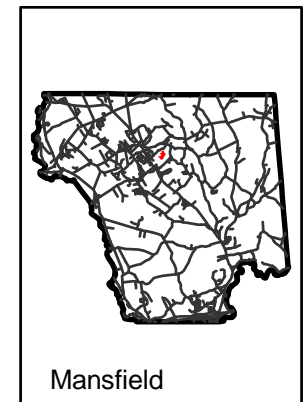
Please help the Trust safeguard this preserve by following these rules:
Take only pictures and leave only footprints.
Keep dogs on leash.
NO: motor vehicles, horses, fires, or camping



To report a problem, please contact us at: 860 429-9023 or joshuastrust@snet.net

Learn more about the Trust at: joshuaslandtrust.org

Location:



Directions: Trail access is from the Lutheran Church parking lot on the right side of Dog Lane .3 mi. from Rt. 195 in Storrs. Alternate access is from ball field parking lot past Storrs Post Office. No parking is allowed on Hanks Hill Road.