

Pigeon Swamp Preserve

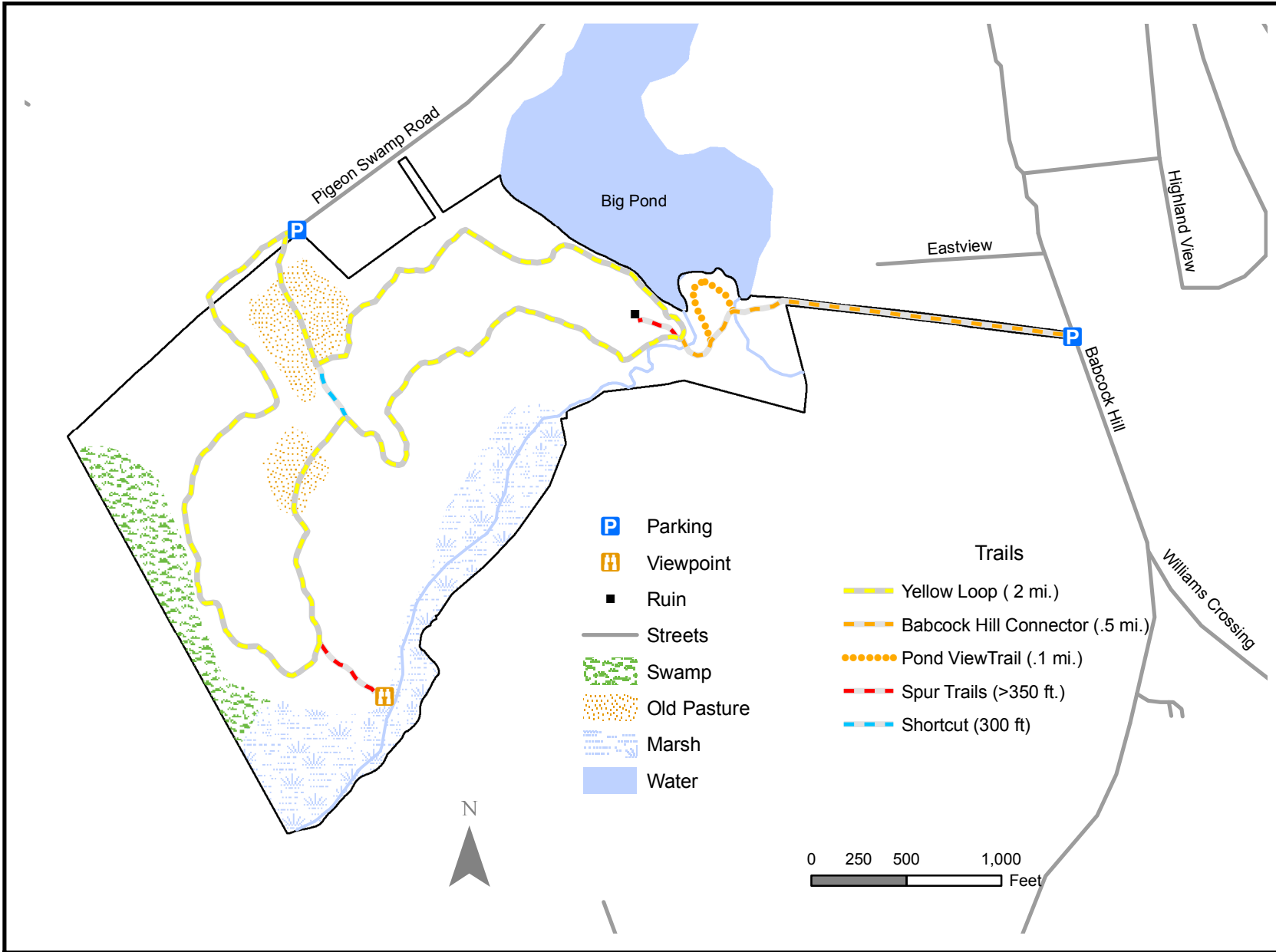
Lebanon, CT

Pigeon Swamp is a 135-acre preserve that was given to Joshua's Trust in 1996 by Drs. Mervyn and Olga Little. Its name derives from its historic use as a roosting area for thousands of passenger pigeons in migration. It contains 3 miles of level trails which take the visitor to a variety of habitats (marsh, swamp, forest and old pasture) and historic sites (old mill dam and sluice, and house foundation). It is being managed primarily as wildlife habitat, and ongoing restoration of old pastures may be observed.



Joshua's Trust

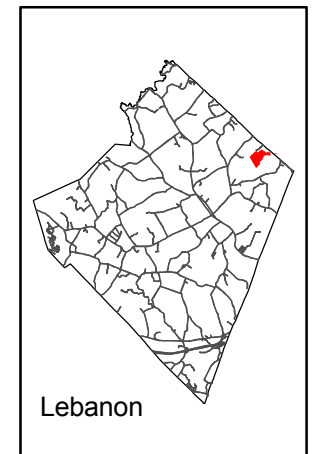
Please help the Trust safeguard this preserve by following these rules:
 Take only pictures and leave only footprints.
 Keep dogs on leash.
 NO: motor vehicles, horses, fires, or camping



To report a problem, please contact us at: 860 429-9023 or joshuastrust@snet.net

Learn more about the Trust at: joshuaslandtrust.org

Location:



Directions: From the junction of Rt. 32 and Rt. 203 in South Windham, go west on Main St. Turn left just past the blue firehouse onto Pigeon Swamp Road. Go about one mile to the end of the road. Parking is to the left.